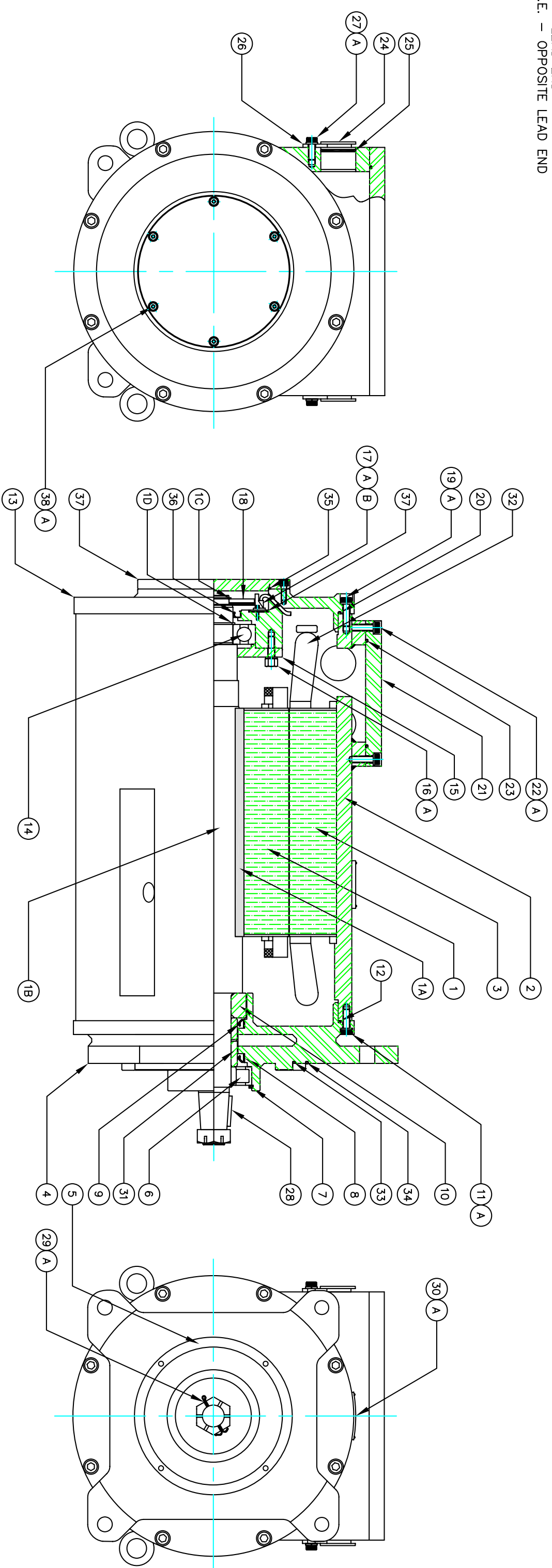


ITEM	DESCRIPTION	QTY	PART NUMBER	ITEM	DESCRIPTION	QTY	PART NUMBER	ITEM	DESCRIPTION	QTY	PART NUMBER	ITEM	DESCRIPTION	QTY	PART NUMBER
1	ROTOR/SHAFT ASSY	1	MV1000-113	10	XP SLEEVE	1	MV1000-013	19	SHCS - L.E. BRKT	8	M10 x 35MM	29	SLOTTED NUT - EXT	1	MV1000-022
1A	ROTOR KEY	1	0.5 X 0.5 X 13.25 IN	11	SHCS - O.L.E. BRKT	8	M12 x 25MM	19A	LKWR - L.E. BRKT	8	Ø 10 SPRINGWASHER	29A	COTTER PIN - NUT	1	Ø 3.5MM
1B	SHAFT	1	MV1000-114	11A	LKWR - O.L.E. BRKT	8	Ø 12 SPRINGWASHER	20	ORING - L.E. BRKT	1	Ø 3.0MM x 1130MM	30	NAMEPLATE	1	MV1000-023
1C	WHEEL SNAP RING	1	Ø 50 EXT.	12	ORING - O.L.E. BRKT	1	Ø 3.0MM x 1122MM	21	H.H. COVER	1	MV1000-019	30A	DRIVE SCREWS - N.P.	4	1/8" x 5MM
1D	L.E. BRG SNAP RING	1	Ø 60 EXT.	13	L.E. BRACKET	1	M6006-115	22	SHCS - H.H. COVER	12	M10 x 25MM	31	DE SEAL COLLAR	1	MV1000-024
2	FRAME	1	MV1000-005	14	BALL BRG	1	6312 C4	22A	LKWR - H.H. COVER	12	Ø 10 SPRINGWASHER	32	RTD	3	M6006-003
3	STATOR CORE	1	MV1000-006	15	L.E. BRG COVER	1	M6006-116	23	ORING - H.H. COVER	1	Ø 3.0MM x 900MM	33	ORING - PLOT	1	Ø 3.5MM X 718MM
4	O.L.E. BRACKET	1	MV1000-007	16	HHCS - BRG CVR	4	M10 X 35MM	24	GLAND PLUG	2	MV1000-020	34	ORING - ADAPTOR	1	Ø 3.5MM X 838MM
5	ADAPTOR RING	1	MV1000-008	16A	LKWR - BRG CVR	4	Ø 10 SPRINGWASHER	25	ORING - GLAND PLUG	2	Ø 2.0MM x 149MM	35	ORING - ENCODER CVR	1	Ø 2.5MM X 537MM
6	ROLLER BRG	1	NU 310 C4	17	ENCODER	1	M6006-006	26	RETAINER - GLAND	2	MV1000-021	36	L.E. BRG SEAL	1	SMIM 589010
7	O.L.E. BRG SNAP RING	1	Ø 110 INT.	17A	ENCODER SPACER	1	M6006-117	27	SHCS - RETAINERS	8	M10 x 25MM	37	ENCODER COVER	1	M6006-118
8	O.L.E. BRG SEAL	1	MV1000-011	17B	SHCS - ENCODER	2	M4 X 15MM	27A	LKWR - RETAINERS	4	Ø 10 SPRINGWASHER	38	SHCS - ENCODER CVR	6	M8 X 20MM
9	INGRESS SEAL	1	MV1000-012	18	TOOTHED WHEEL	1	M6006-007	28	PINION KEY	1	1/6" x 1/6" x 33MM	38A	LKWR - ENCODER CVR	6	Ø 8 SPRINGWASHER

L.E. - LEAD END
O.L.E. - OPPOSITE LEAD END



UPGRADES		B DATE		D DATE		ENG		GAF		13 MAR 07		SHEET		PART NUMBER	
A DATE	NOTE	B DATE	NOTE	D DATE	NOTE	ENG	DRAWN	CHK'D	APP'D	AUTO CAD #	AC TRACTION MOTOR	55 KW	1 OF 1	M6005-010	M6005-010

SAMINCO
 10030 AMBERWOOD ROAD, FT. MYERS, FL. 33913
 OFFICE (941) 561-1561 FAX (941) 561-1502
 EMAIL: SAMINCO@SAMINCOINC.COM

MSHA ASSY # 15190C
MSHA APPROVAL # 07-JA050005-0