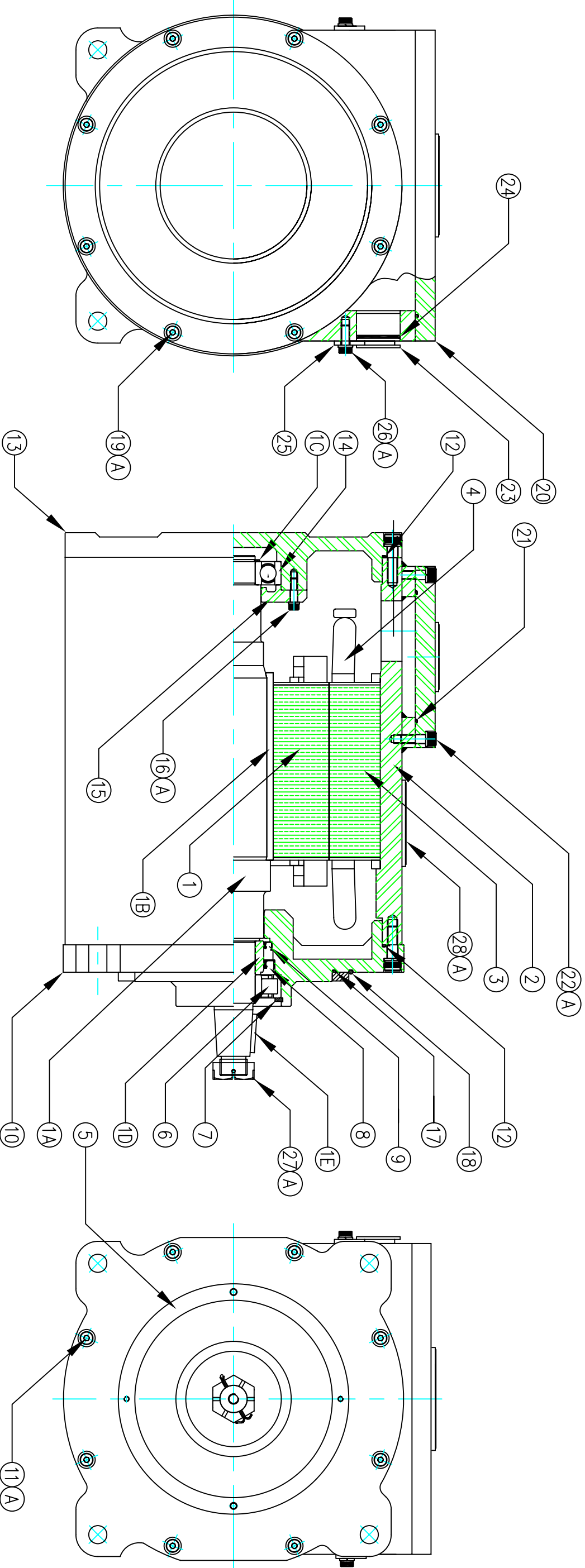


020-5009W	KW	DUTY	VOLTS	HZ	PHASE	RPM	AMPS	COIL DATA		MSHA	MSHA			
MOTOR NO.	26	60 MIN	440	50	3	1478	50.6	SET OF COILS	QTY/SET	SPAN	CONN.	ASSY #	APPROVAL #	
M6005-020								MV1000-112	48	1-10	2-Y	13290F	07-JA060014-0	
ITEM	DESCRIPTION	QTY	PART NUMBER	ITEM	DESCRIPTION	QTY	PART NUMBER	ITEM	DESCRIPTION	QTY	PART NUMBER			
1	ROTOR/SHAFT ASSY	1	MV1000-101	6	ROLLER BRG	1	MV1000-009	15	BRG RETAINER	1	MV1000-109			
1A	SHAFT	1	MV1000-102	7	O.L.E. BRG SNAP RING	1	110 MM INT	16	SHCS - BRG RTNR	4	M8 x 30MM			
1B	ROTOR KEY	1	0.5 X 0.5 X 9.25 IN	8	BEARING SEAL	1	MV1000-106	16A	LKWR - BRG RTNR	4	Ø 8 SPRINGWASHER			
1C	LE BRG SNAP RING	1	50 MM EXT	9	INGRESS SEAL	1	MV1000-107	17	ORING - PILOT FIT	1	Ø 3.5MM x 718MM			
1D	DE SEAL COLLAR	1	MV1000-111	10	O.L.E. BRACKET	1	MV1000-105	18	ORING - ADAPTOR	1	Ø 3.0MM x 838MM			
1E	PINION KEY	1	7/16" x 7/16" x 1.75 IN	11	SHCS - O.L.E. BRKT	8	M12 x 40MM	19	SHCS - L.E. BRKT	8	M12 x 40MM			
2	FRAME	1	MV1000-103	11A	LKWR - O.L.E. BRKT	8	Ø 12 SPRINGWASHER	19A	LKWR - L.E. BRKT	8	Ø 12 SPRINGWASHER			
3	STATOR CORE	1	MV1000-104	12	ORING - BRACKETS	2	Ø 3.0MM x 1082MM	20	H.H. COVER	1	MV1000-110			
4	RTD	1	M6006-003	13	L.E. BRACKET	1	MV1000-108	21	ORING - H.H. COVER	1	Ø 3.0MM x 878MM			
5	ADAPTOR RING	1	MV1000-008	14	BALL BRG	1	MV1000-015	22	SHCS - H.H. COVER	12	M10 x 30MM			
											28A	DRIVE SCREWS - N.P.	4	7/8" x 5MM

L.E. - LEAD END
O.L.E. - OPPOSITE LEAD END



UPGRADES		B DATE NOTE	D DATE NOTE	ENG		GAF	12 MAR 07	SAMI NCO		26 KW AC CONVEYOR MOTOR	
A DATE NOTE	C DATE NOTE	E DATE NOTE	DRAWN	CHK'D	APP'D	10030 AMBERWOOD ROAD, FT. MYERS, FL. 33913 OFFICE (941) 561-1561 FAX (941) 561-1502 EMAIL: SAMINCO@SAMINCOINC.COM		AUTO CAD #	SHEET	PART NUMBER	
								M6005-020	1 OF 1	M6005-020	