

XM35
35HP 250VDC XP TRACTION MOTOR
For Shuttle Cars



SAMINCO Part Number: M6001-013

35HP 250VDC 1500RPM

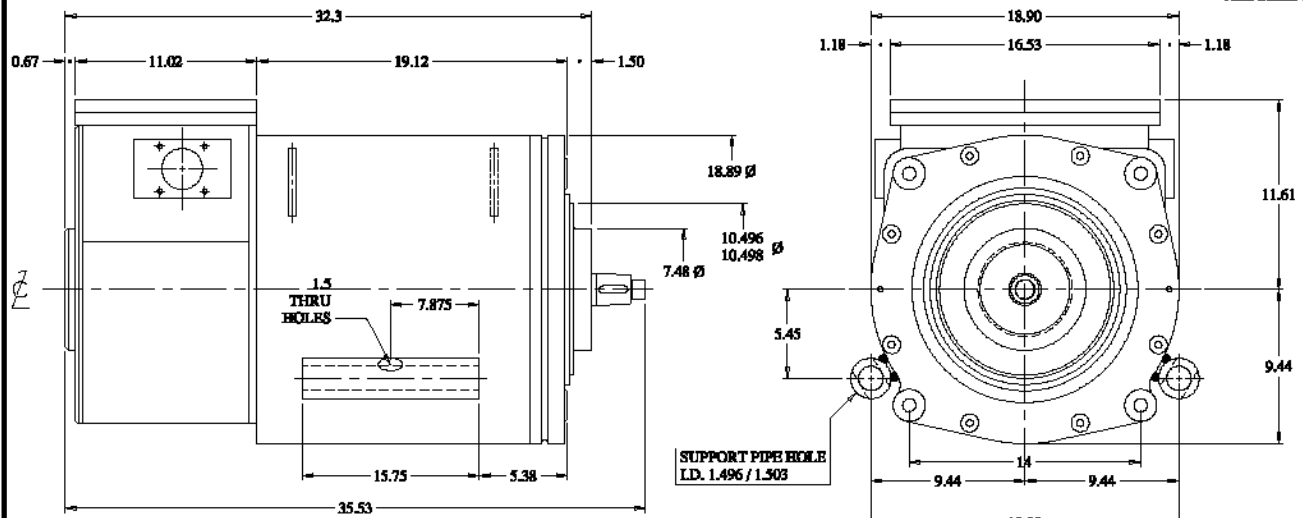
MSHA Approval number: 07-JA060001-0
Enclosure: TEXP, Explosion Proof
Duty Rating: 1/2 hour
Insulation: Class F Silicone free
Varnish: Epoxy, VPI



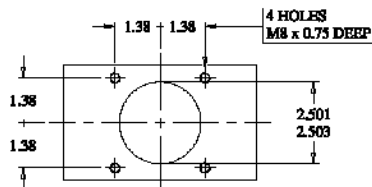
- MSHA approved Explosion proof DC traction motor for Shuttle Cars
- Designed as a drop-in replacement for the Joy 600312-57 DC traction motor
- Designed for use with the Saminco JS400/JD400 AC/DC and A400 DC/DC Traction Drives
- Capable of up to 300% nominal torque output
- Insulation system resistant to repeat transients and designed for excellent heat transfer
- Large inspection window for easy installation and maintenance
- Custom manufactured to Saminco specifications
- Available with "Series" or "Shunt" field windings

XM35 Dimensions

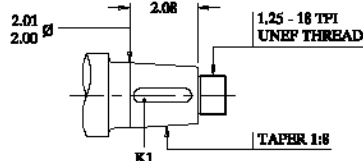
ALL SIZES IN INCHES



CABLE GLAND HOLDER
 SCALE 2 : 1



SHAFT EXTENSION DETAIL
 SCALE 2 : 1

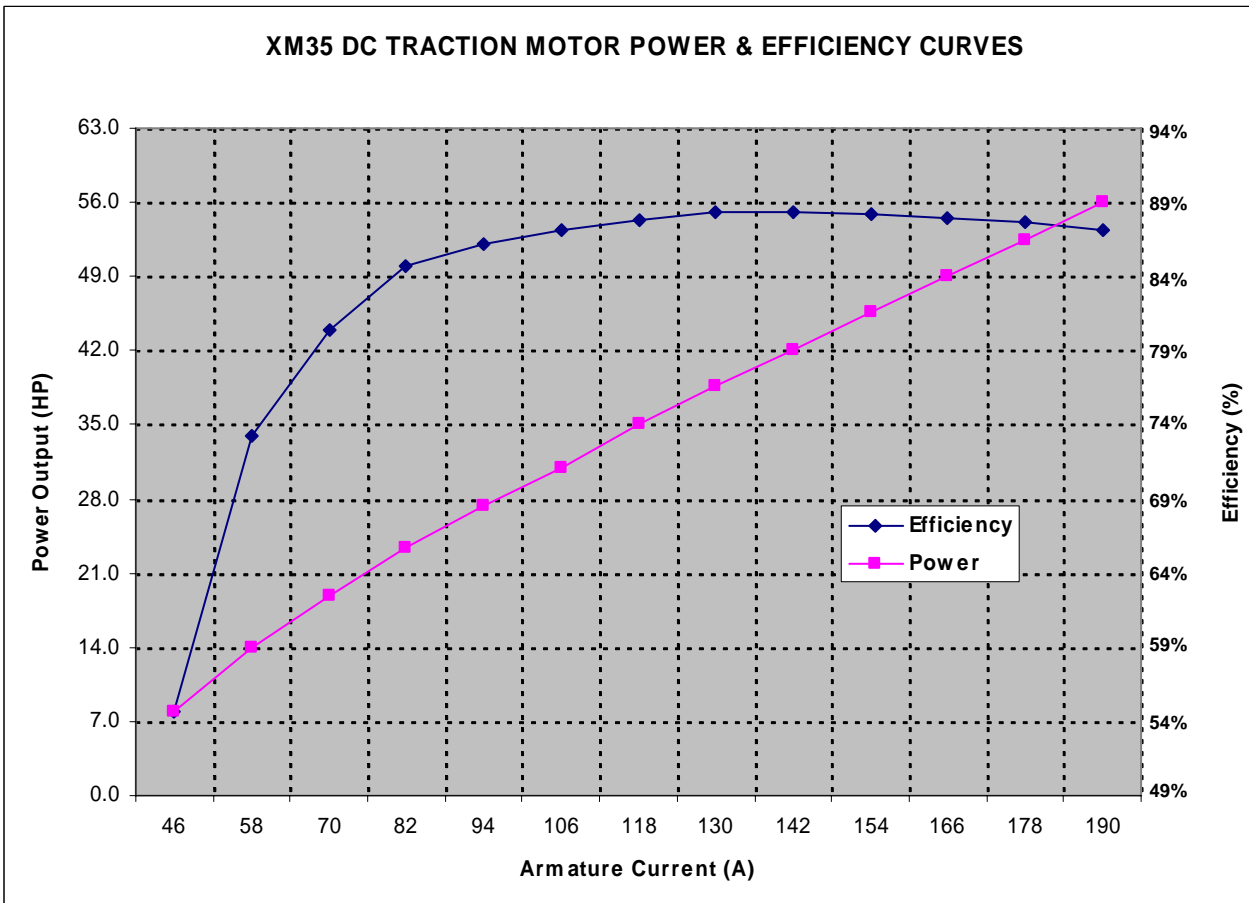
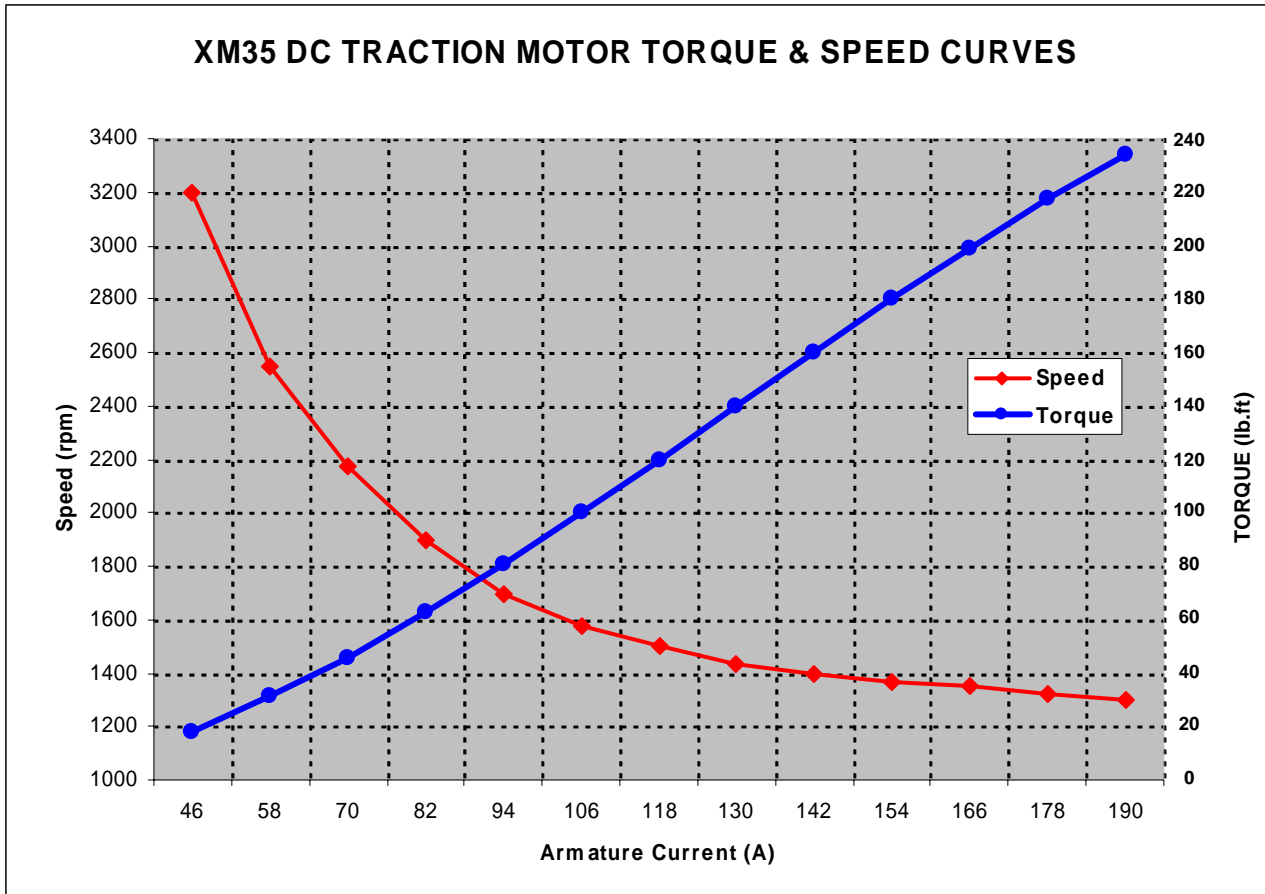


K1 - KEYWAY
 0.437 WIDE x 0.218 DEEP x 1.75 LONG

XM35

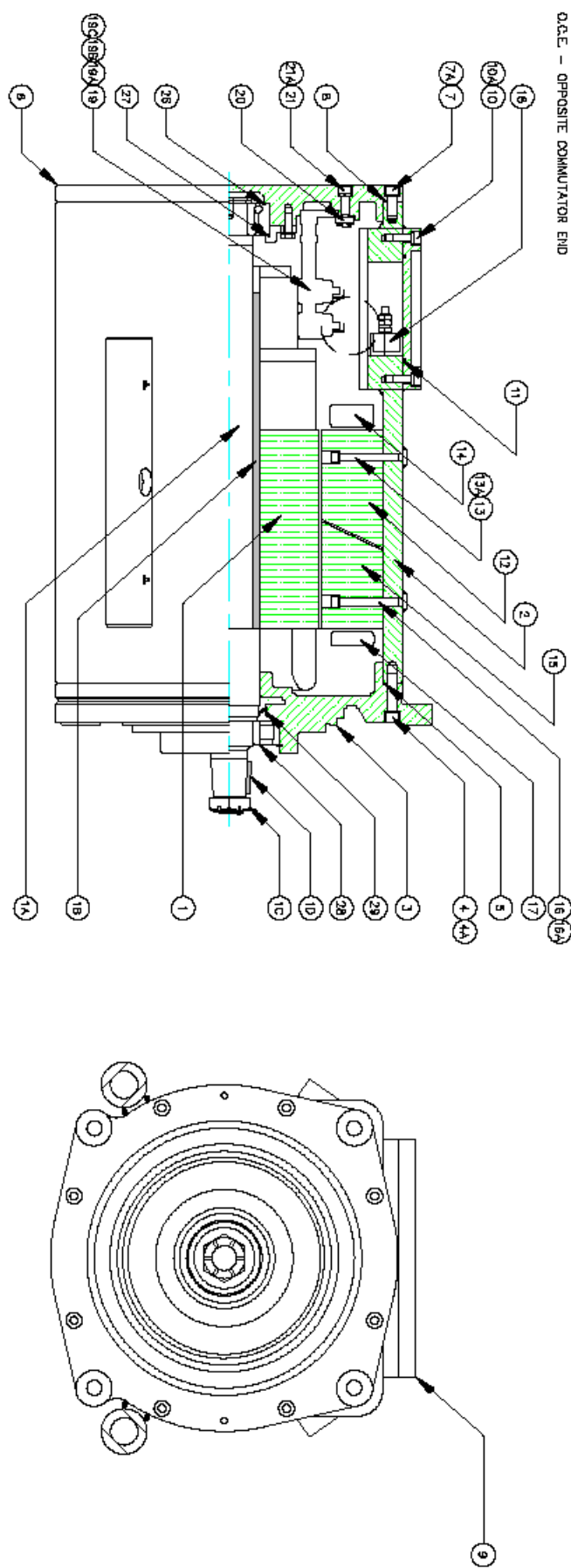
35HP 250VDC XP TRACTION MOTOR

Performance Curves



XM35 - Spare Parts List

E10-1009W		HP	DUTY	VOLTS	WDG	RPM	AMPS	COIL DATA		MSHA		MSHA			
MOTOR NO.	35	60 MIN	250	SERIES	1500	116	SET	ARMATURE COILS	QTY/SET	SPAN	ASSY #	APPROVAL #			
M601-013							MV6013-021	37	1-10		18160	07-JA060001-0			
ITEM	DESCRIPTION	QTY	PART NUMBER	ITEM	DESCRIPTION	QTY	PART NUMBER	ITEM	DESCRIPTION	QTY	PART NUMBER	ITEM	DESCRIPTION	QTY	PART NUMBER
1	ARMATURE ASSY	1	MV6013-001	7A	LKWR - CE BRKT	8	12MM	16A	LKWR - INTERPOLE	12	10MM	24	KEEPER - GLAND	2	MV6013-013
1A	SHAFT	1	MV6013-002	8	O RING - CE BRKT	1	4MM X 40MM	17	INTERCOIL	4	MV6013-010	25	SHCS - KEEPER	4	M8 X 20MM
1B	ARMATURE KEY	1	10MM X 8MM X 294MM	9	HH. COVER	1	MV6013-006	18	TERMINAL STRIP	1	MV6013-017	25A	LKWR - KEEPER	4	20MM
1C	CROWN NUT	1	M6013-002C	10	SHCS - HH CVR	10	M10 X 30MM	19	BRUSH GEAR ASSY	1	MV6013-014	26	C.E. BRG	1	331022 C3
1D	PIVOT KEY	1	8 X 8 X 1.75 IN	10A	LKWR - HH CVR	10	10MM	19A	BRUSHES	8	MV6013-014A	27	C.E. BRG CLAMP	1	MV6013-016
2	FRAME	1	MV6013-003	11	O RING - HH CVR	4	4MM X 780MM	19B	BRUSH HOLDERS	8	MV6013-014B	28	O.C.E. BRG	1	MV6013-014C
3	O.C.E. BRACKET	1	MV6013-004	12	FIELD POLE	4	MV6013-007	19C	INSULATORS	8	MV6013-014C	29	O.C.E. SEAL	1	MV6013-023
4	SHCS - OCE BRKT	8	M12 X 30MM	13	SHCS - FIELD POLE	12	M10 X 85MM	20	BRUSH CLAMP CLIP	2	MV6013-015	30	NAMEPLATE	1	MV6013-018
4A	LKWR - OCE BRKT	8	12MM	13A	LKWR - FIELD POLE	12	10MM	21	ROCKER BOLT	2	M6013-024	31	MAX SPD PLATE	1	MV6013-019
5	O RING - OCE BRKT	1	4MM X 40MM	14	FIELD COIL	4	MV6013-008	21A	LKWR - ROCKER BOLT	2	12MM	32	WARNING PLATE	1	MV6013-020
6	C.E. BRACKET	1	MV6013-005	15	INTERPOLE	4	MV6013-009	22	GLAND ADAPTOR	2					
7	SHCS - CE BRKT	8	M12 X 60MM	16	SHCS - INTERPOLE	12	M10 X 85MM	23	GLAND PLUG	1	MV6013-012				



XM35
35HP 250VDC XP TRACTION MOTOR
For Shuttle Cars



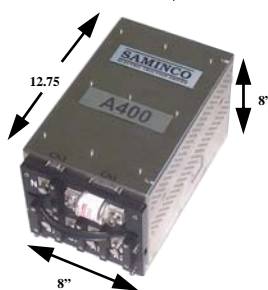
The Saminco XM35 motor is designed to meet MSHA requirements for extreme duty underground traction applications.

Built to Saminco specifications, the XM35 motor will outperform OEM motors with the same ratings.

SAMINCO		DC TRACTION MOTOR		
		WWW.SAMINCOINC.COM		
POWER	VOLTAGE	CURRENT	RPM	FIELD
35HP	250	116	1500	-----
INSULATION	DUTY	TEMP RISE	WINDING	
CLASS F	1 HOUR	110°C	SERIES	
ENCLOSURE		FRAME	SERIAL N^o	
TEXP		18097	XXXXX	
MODEL NUMBER		MOTOR TYPE	MSHA APPROVAL N^o	
M6001-013		18160	07-JA060001-0	
MOTOR MASS		DATE COMPLETED		
1408 lbs		XX-XX-XX		

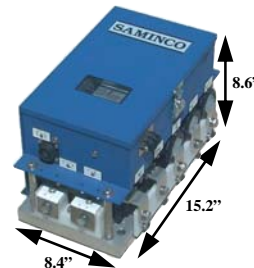
Compatible with:

A400
40HP μ P DC/DC DRIVE
180VDC TO 340VDC INPUT



A400 - Microprocessor DC/DC Motor Controller
 Part # A800205-1

JD-400
40HP μ P AC/DC DRIVE
240VAC to 660VAC input



JD400 - Microprocessor AC/DC Motor Controller
 Part # A800815
 JS400 - Analog AC/DC Motor Controller
 Part # A800715

WWW.SAMINCOINC.COM

Fort Myers Florida
 Phone: (239) 561-1561 Fax: (239) 561-1502

Lavalette West Virginia
 Phone: (304) 523-4700 Fax: (304) 523-4039

Norris City Illinois
 Phone: (618) 599-2567 Fax: (618) 378-2402