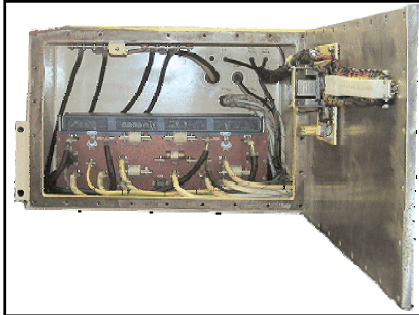


Solid State Panels For Battery and Trailing Cable Systems

Battery Panels

A750



A777



Q750



Over 600 Contactor-less battery panels for scoops, coal haulers and utility vehicles are in operation underground.

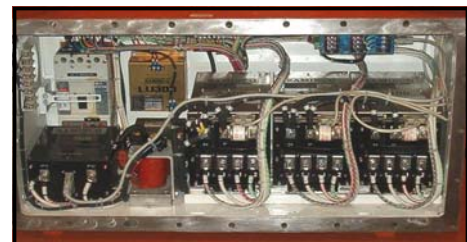
- Single or Dual motor applications for scoops and haulers
- Tram only or tram and convey systems for shuttle cars
- Torque control mode gives same operational feel as with an automobile
- Speed control mode allows for precise creep and accurate movement of the vehicle
- Automatic differential type control for dual motor system - eliminates wheel spin-out
- Saminco panels are completely replaced with repair or refurbishment
NO questionable components are left in the electrical system

DC Trailing Cable

Saminc VF1-75 Shuttle Car Panel

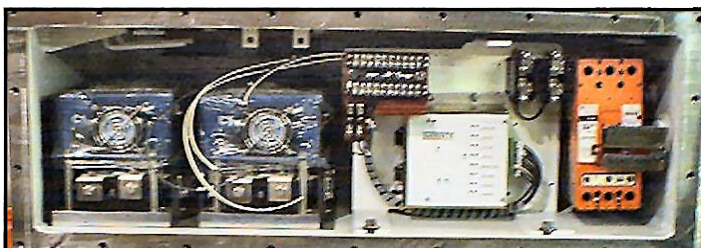


Saminc A400 Shuttle Car Panel



AC Trailing Cable

Saminc JS-400 Continuous Miner Panel



Saminc JS-400 Shuttle Car Panel

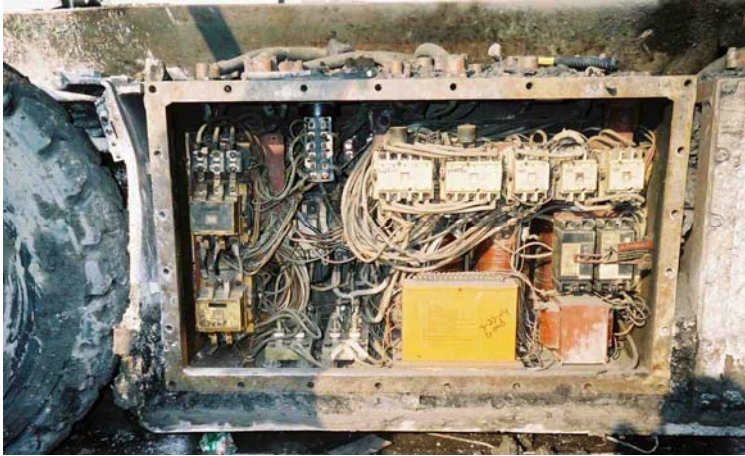


Over 800 Contactor-less panels for shuttle cars and continuous miners are in operation underground.

Solid State Panels For Coal Mining and Haulage



The Saminco SWAP Team will come to your location
to rebuild and commission your electrical panel.



Go from this...



To this...



To this...

At YOUR Location